

THE *Fairmont*  
ORCHID  
*Hawai'i, USA*



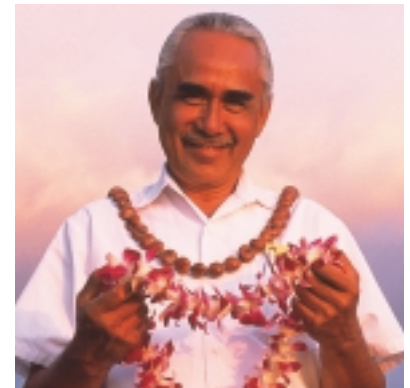
*Planning*  
G U I D E

## *Live the spirit of Aloha*

It calls to you, this spirit of Aloha. This place we're so inextricably drawn to, seemingly both near and far away. It comes from the land: a study in contrasts with volcanic peaks flanked by unending stretches of mineral-rich sands, from jet-black to bone-white. And it resides in a landscape vibrant with lush foliage, and an ocean teeming with marine life. The scents call to you: flowing in from Pacific tradewinds and the sweet fragrance of a tropical lei. And perhaps most of all, it's the people: peaceful and warm, gracious and welcoming. Here, you are respected. You are honored. This rare blend of land, people and culture engages the soul and the mind. It is the spirit of Aloha. And yours to capture at The Fairmont Orchid, Hawai'i.

## *The world's meeting place*

The largest island in the Hawaiian archipelago, Hawai'i or the "Big Island" as it is lovingly referred, accommodates both business and pleasure. Its ethereal beauty inspires thought. Opportunities abound. Amenities are plentiful. Yet there is an unhurried pace, and a sense of seclusion. It's why the Big Island is the world's meeting place. Prolific natural attractions are scattered across a diverse landscape. Cacti-studded grasslands and coffee fields give way to peaks like Kilauea – the world's most active volcano – and Mauna Kea, often snow-capped in winter. Phenomenal deep-sea fishing is here; divers can take up residency with Technicolor fish, while golfers risk being entranced on dramatic oceanside courses. Hikes, backcountry horseback riding and aerial tours provide unforgettable journeys...allowing journeys of a business nature to unfold effortlessly in turn.



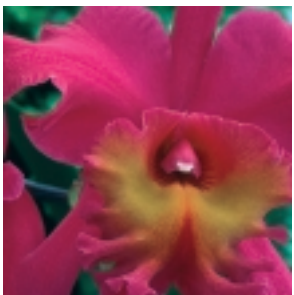




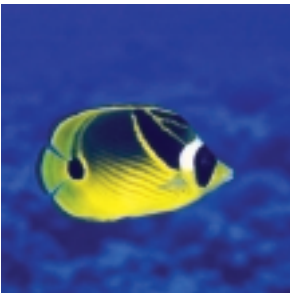
*Within arm's reach*





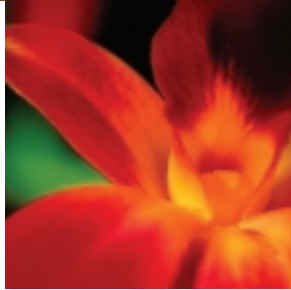


The Northwest. The Big Island's Kohala Coast. Where the sun sets to great symphony along uncrowded beaches. Where historic sites are preserved, and traditional dance and coconut leaf weaving are still practiced. On 3,200-acre Mauna Lani Resort, Fairmont Orchid guests are within arm's reach of a historic royal fish pond; Pu'ako Petroglyph Preserve with its lava rock etchings; and the hotel's own blue lagoon: Pauoa Bay, sporting a dazzling coral reef ecosystem including Hawaiian green sea turtles (honu). Test teamwork aboard an outrigger canoe. Or have delegates strategize in the footsteps of PGA Senior Skins on two championship 18-hole courses. Whether for sheer inspiration or a meeting of the minds, The Fairmont Orchid delivers a quintessential Hawaiian experience with world-class offerings. After all, we take our business seriously, too.



*Simply refined*





As exquisite as its surroundings, The Fairmont Orchid is refined elegance in polished marble, wood, native art and indigenous plants. It's alluringly simple, yet technologically sophisticated. A sprawling beachside open-breeze convention venue promotes open minds, while three garden-terraced ballrooms, a full-size amphitheater, and seven conference rooms host formal affairs. Whether a function for 50 or 1000, The Fairmont Orchid's inspired staff ensures its success. We can stage a dramatic "Big Kahuna" arrival aboard an outrigger canoe for the CEO. Integrate native culture and entertainment with The Fairmont Orchid's "Beachboys." Or offer synergy of mind and body in our serene Spa.

We believe business can be a pleasure too.



Succulent art, superlative ingredients...dining is integral to The Fairmont Orchid experience. Coveted Brown's Beach House has perfected outdoor "Island-Inspired" cuisine, while The Grill's decidedly refined ambience pleases discriminating diners with seasonal offerings and impeccable service. Casual establishments are as remarkable, highlighted by Brown's Deli and Nario's Sushi Bar & Restaurant.

The taste of Hawai'i. The taste of sublime. The Fairmont Orchid delivers.



*Savor the experience*

